

STUDENT HEALTH & WELLNESS CENTER



October, 2018



*Exterior view from
the southwest*

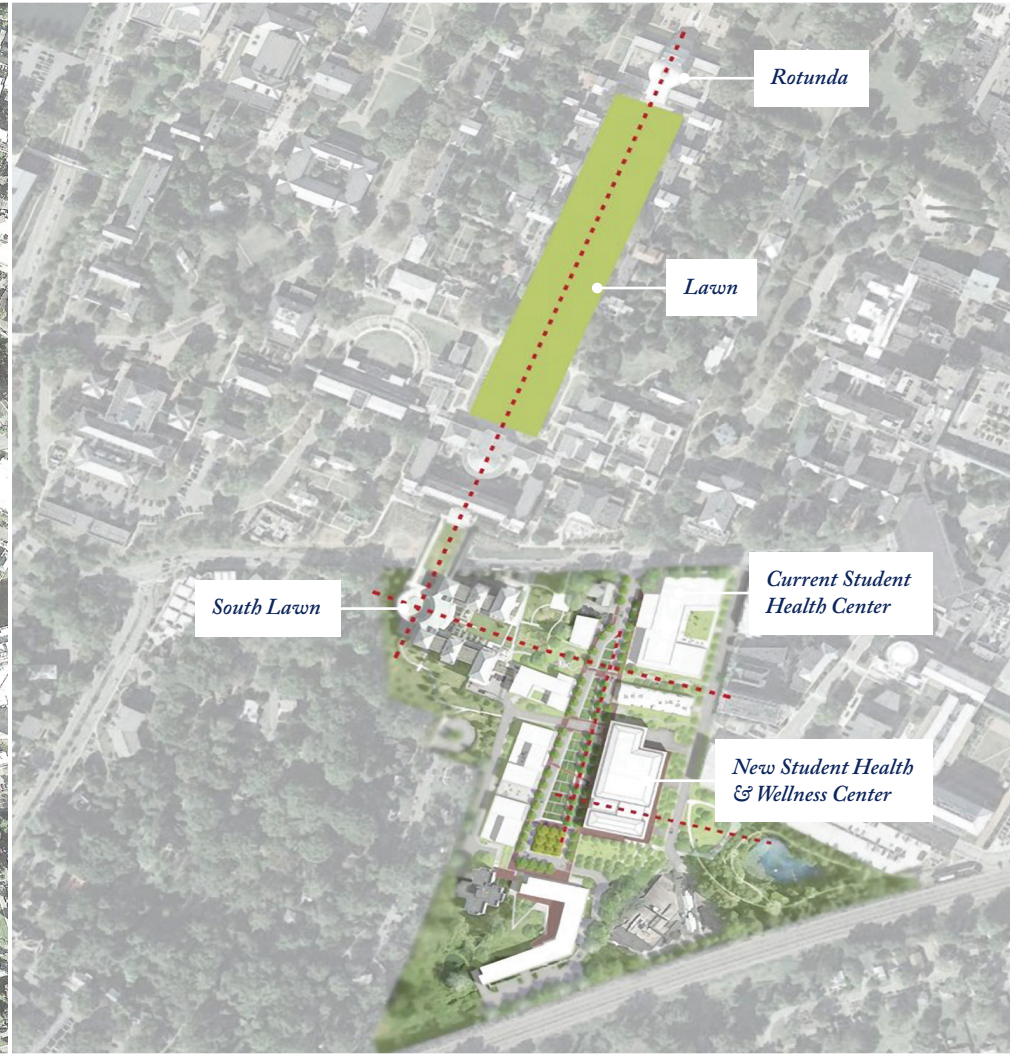
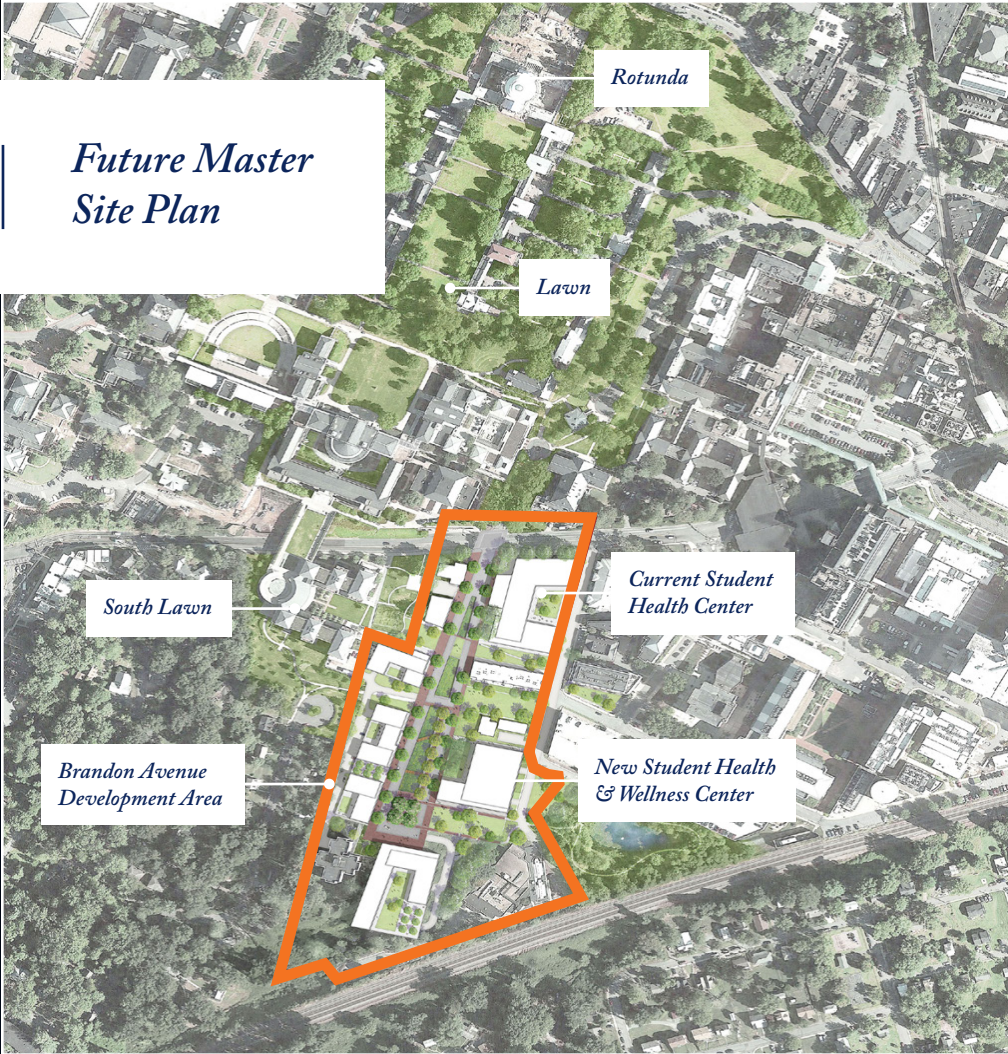


THE STUDENT HEALTH & WELLNESS CENTER

is a core component of the University's efforts to offer the best possible student experience. Your gift to the Student Health & Wellness Center will set students on the path to good health for their lives ahead, giving them the foundation to make the most of an excellent education.

[GIVING.VIRGINIA.EDU](https://giving.virginia.edu)

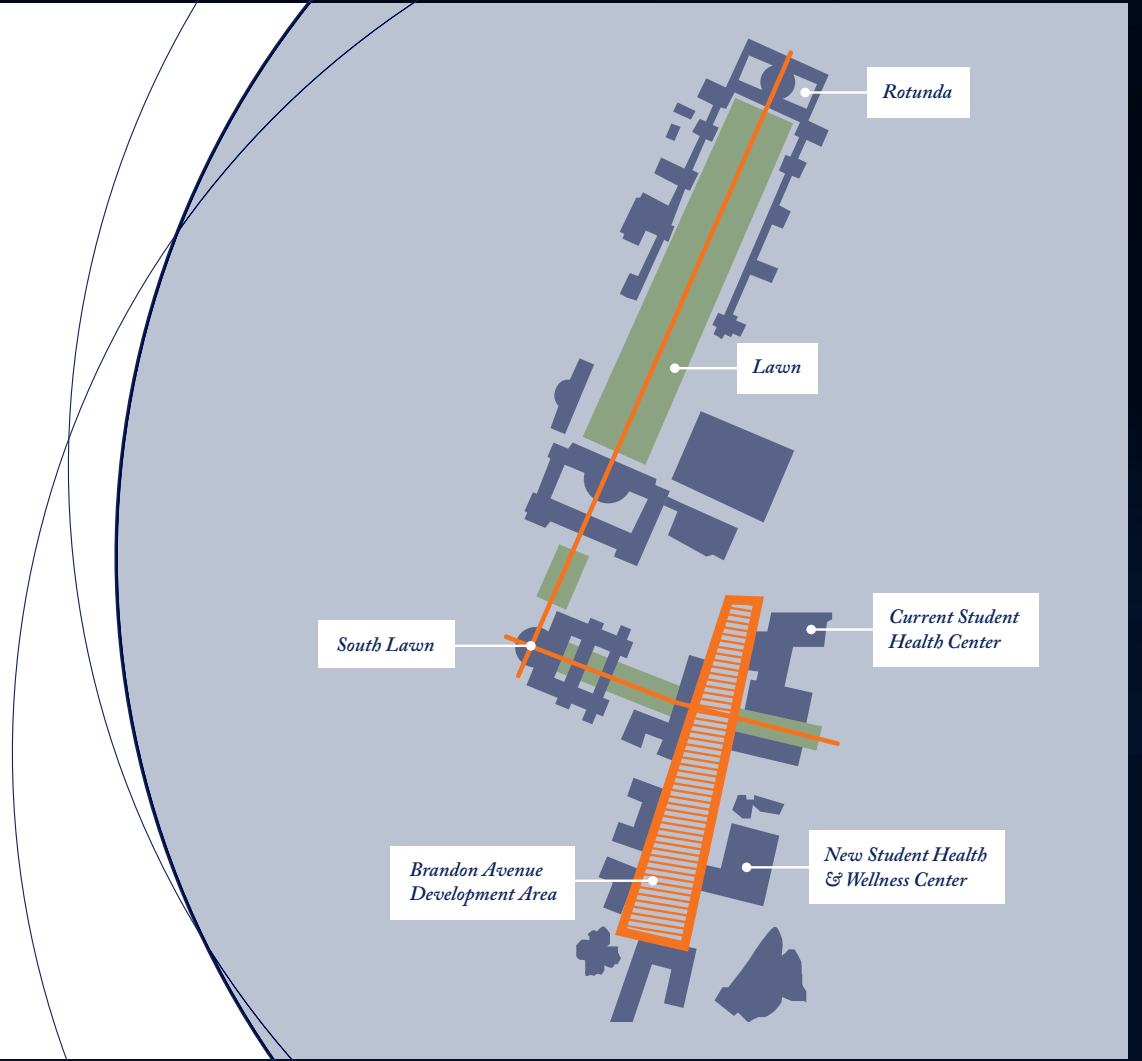
*Future Master
Site Plan*

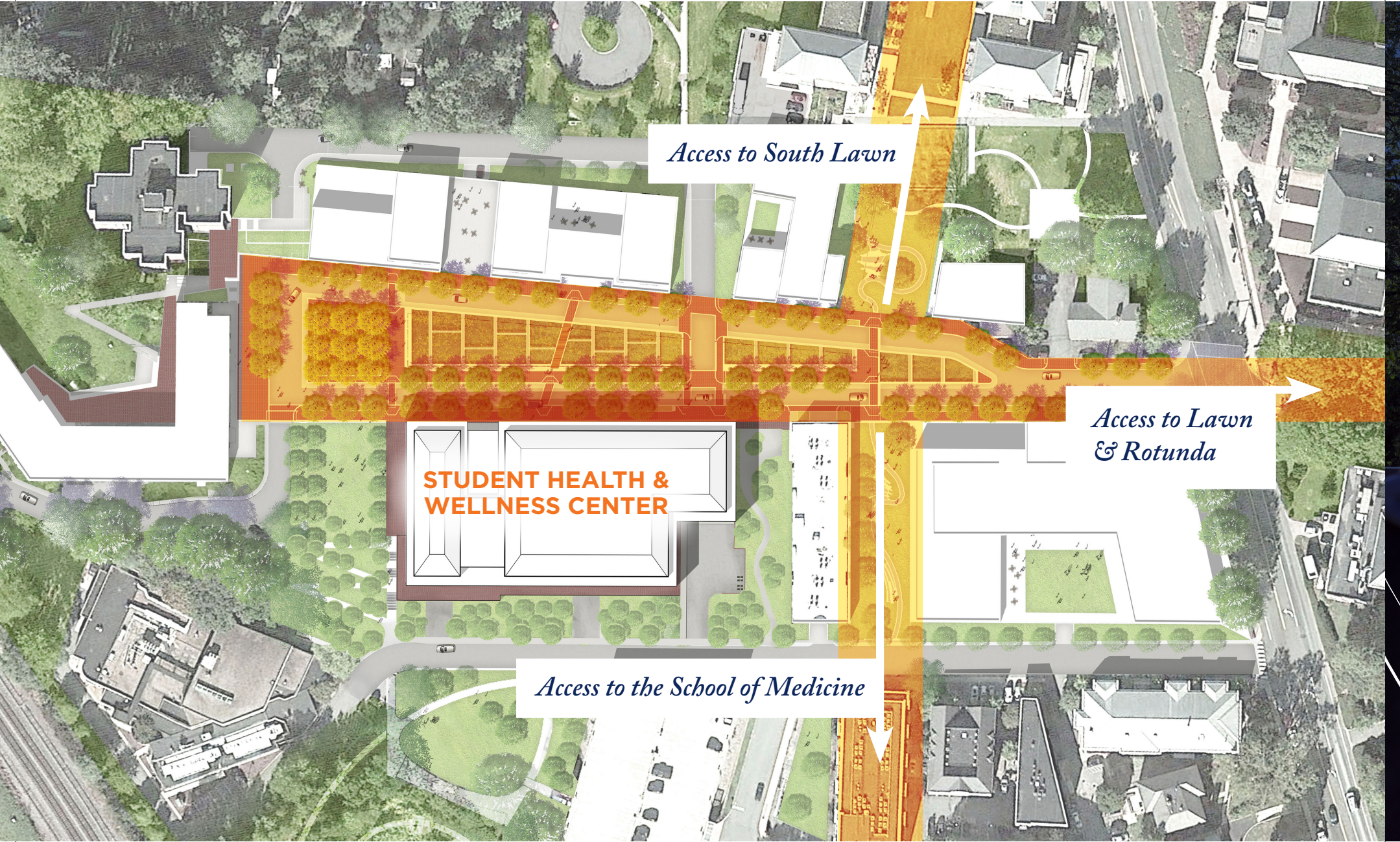


STEPS FROM THE LAWN

As part of UVA's Brandon Avenue Master Plan, the Student Health & Wellness Center will be the cornerstone of Charlottesville's first Green Street community. Strategically located, its new setting extends the energy, beauty and flow of the Grounds.

Plans call for retaining existing trees and creating a sustainable landscape to enhance the neighborhood connection to our University.





Access to South Lawn

*Access to Lawn
& Rotunda*

Access to the School of Medicine

**STUDENT HEALTH &
WELLNESS CENTER**

EXPANDING GROUNDS

The University of Virginia has acquired Brandon Avenue and the surrounding property. Transforming the street with park-like landscaping features will expand the Grounds and connect student life across the University.

Currently a dark, narrow road lined with cars and ending at the railroad tracks, Brandon Avenue will be transformed into a walkable and bikeable community, promoting outdoor activities and engagement in a healthy lifestyle for the entire neighborhood.

SUPPORTING A CRITICAL PRIORITY

An anonymous lead donor has shown support for the new center with a gift of \$40 million, representing 40 percent of the \$100 million projected cost. The project recently gained momentum with the endorsement of President James E. Ryan, who has identified the Student Health & Wellness Center as one of his top fundraising priorities.



“Katie and I have raised our four children with a firm belief that an ounce of prevention is worth a pound of cure. I believe, for similar reasons, that the University needs to focus as much on wellness and healthy habits as on responses to illness, injury, and distress. That’s why the new Student Health & Wellness Center is a critical priority for UVA and one I strongly support.”

—JAMES E. RYAN, PRESIDENT



East view of the first-floor lobby



PROMOTING TOTAL HEALTH

Natural light will fill the entrance as well as all three floors of the new facility. The glass-walled reception area provides a bridge between the building's north and south structures.

Featuring space for clinical, educational, and research activities in a welcoming environment, the center will house five core areas: General Medicine, Women's Health, Counseling and Psychological Services, Student Disability Access Center, and Health Promotion. The Department of Kinesiology in the Curry School of Education will also be located in the new facility.

THE HEART OF WELLNESS

Providing increasing services to a growing number of students requires a great deal more space. Critical core service areas housed in the building will promote total health.

160,000
SQ/FT CENTER

will serve

23,000
STUDENTS

*as opposed to the 15,000 student capacity
when the existing facility opened in 1989*



GENERAL MEDICINE

- General Medicine is the go-to primary care resource for students during their time at UVA.
- An anticipated **60,000+ visits** will be scheduled annually in the clinic.

WOMEN'S HEALTH

- UVA's team of health professionals maintains a strong emphasis on preventive care and keeping up with emerging issues in women's health.
- This service anticipates **40% more visits** in the new building.

COUNSELING & PSYCHOLOGICAL SERVICES

- This clinic offers individual counseling services and therapy groups covering an array of issues and needs.
- The new building **adds space for 12+ therapy groups**.

STUDENT DISABILITY ACCESS CENTER

- The Student Disability Access Center ensures an accessible environment for students with disabilities.
- Projections show visits will increase from **5,020 in 2017 to 8,396 in 2030**.

OFFICE OF HEALTH PROMOTION

- This office leads a variety of prevention and education efforts.
- Space for the office's services will be housed within 7,800 square feet.

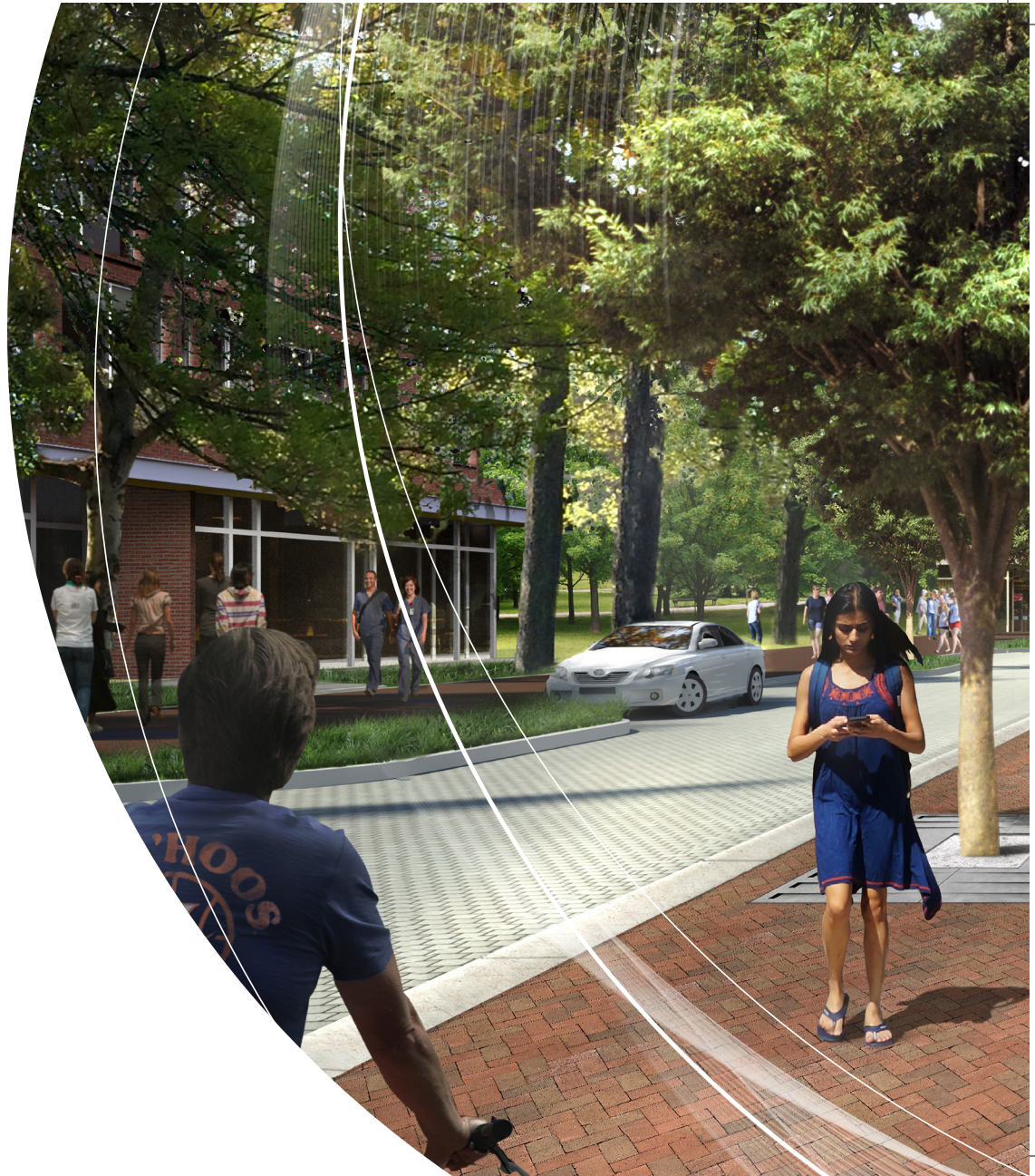
KINESIOLOGY


- The Curry School's top-ranked Department of Kinesiology will move from Memorial Gym to the center.
- A partner in studying physical activity, Kinesiology will share some **21,000 sq. ft.** of space.

GREEN STREET LIVING

The center's focus on comprehensive health and wellness throughout the student experience is integrated in its design and conception within the Green Street landscape plan.

The Green Street space features a park-like setting of broad sidewalks, flowering trees, and ornamental grasses, with a diagonal walkway leading to the center entrance. A nearby pond and other natural elements will invite relaxation and recreation.



An architectural rendering of a modern, multi-story brick building with large glass windows, situated on a park-like street. A wooden pedestrian bridge with a metal railing and a white mesh screen runs across a landscaped area with green grass and yellow flowers. People are walking on the bridge and in the background. The scene is bright and sunny, with trees and a clear sky.

*View from the new Student Health
& Wellness Center traversing the
park-like Green Street setting to
future student residences.*

AT THE CENTER OF LIFE

Steps from residence halls, the Grounds, South Lawn, and the Health System, the Student Health & Wellness Center will be a part of daily student life. The design includes beautiful green spaces, large lounge areas, a teaching kitchen, and a spacious student living room on the first floor.

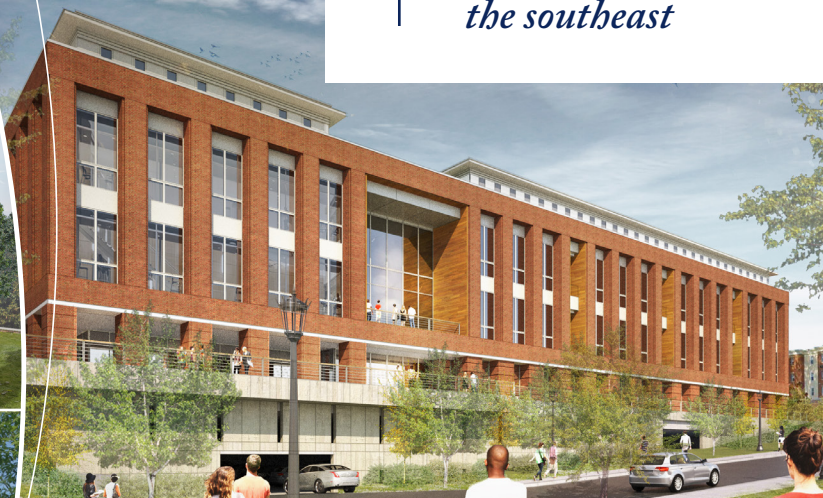
A large, open quadrangle to the south of the building adds vegetation and recreational space.



*Exterior view from
the southwest*



*Exterior view from
the southeast*



*Exterior view from
the northwest*



*Exterior view from
the northeast*





STUDENTS ARE OUR PRIORITY

Student well-being is our highest priority. Our goal is to provide students the best chance for good health and success.

“The new center will enable us to take student health care to a new level and to be on equal footing with our peers. I am excited to say this new facility will set the stage for providing a complete spectrum of care and service.”

**—CHRISTOPHER P. HOLSTEGE, M.D.
EXECUTIVE DIRECTOR OF STUDENT HEALTH**

NAMING OPPORTUNITIES

Physical Space for Student Health Departments

General Medicine — \$5M
Gynecology — \$5M
Counseling and Psychological Services — \$5M
Office of Health Promotion — \$5M
Student Disability Access Center — \$5M
Kinesiology — \$5M

Office of Health Promotion

Teaching kitchen — \$1M
Multipurpose space — \$1M
Reception and waiting area — \$500,000
Recovery space — \$500,000
Wellness suite — \$500,000
Workrooms — \$100,000 each
Director offices — \$100,000 each
Small education rooms — \$25,000 each

Student Disability Access Center

Reception and waiting area — \$500,000
Test administration rooms — \$250,000 each
Director offices — \$100,000 each
Small testing rooms — \$25,000 each
Small rooms — \$25,000 each

General Medicine

Physician's suite — \$500,000
Reception and waiting area — \$500,000
Nurse stations — \$50,000 each
Exam rooms — \$25,000 each

Counseling and Psychological Services

Reception and waiting area — \$500,000
Group therapy rooms — \$100,000 each
Director offices — \$100,000 each
Small rooms — \$25,000 each

Other Naming Opportunities

Main Lobby — \$1M
Oasis Wellness Lounge — \$1M
First-floor student living room — \$1M
Rear terrace — \$500,000
First-floor student lounge — \$250,000
Second-floor student lounge — \$250,000

Kinesiology

Gym — \$500,000
Large labs — \$250,000 each
Treadmill lab — \$250,000
Wet lab — \$250,000
Conference room — \$100,000

CONTACT

Bo Greenwood
Director of Development
Office of Student Affairs

P.O. Box 400807
Charlottesville, VA 22904
434-924-3245 | cgg5d@virginia.edu

[GIVING.VIRGINIA.EDU](https://giving.virginia.edu)



HONOR
the FUTURE

THE CAMPAIGN FOR THE UNIVERSITY OF VIRGINIA



HONOR *the* FUTURE
THE CAMPAIGN FOR THE UNIVERSITY OF VIRGINIA